



MERIDIAN
RESIDENTIAL

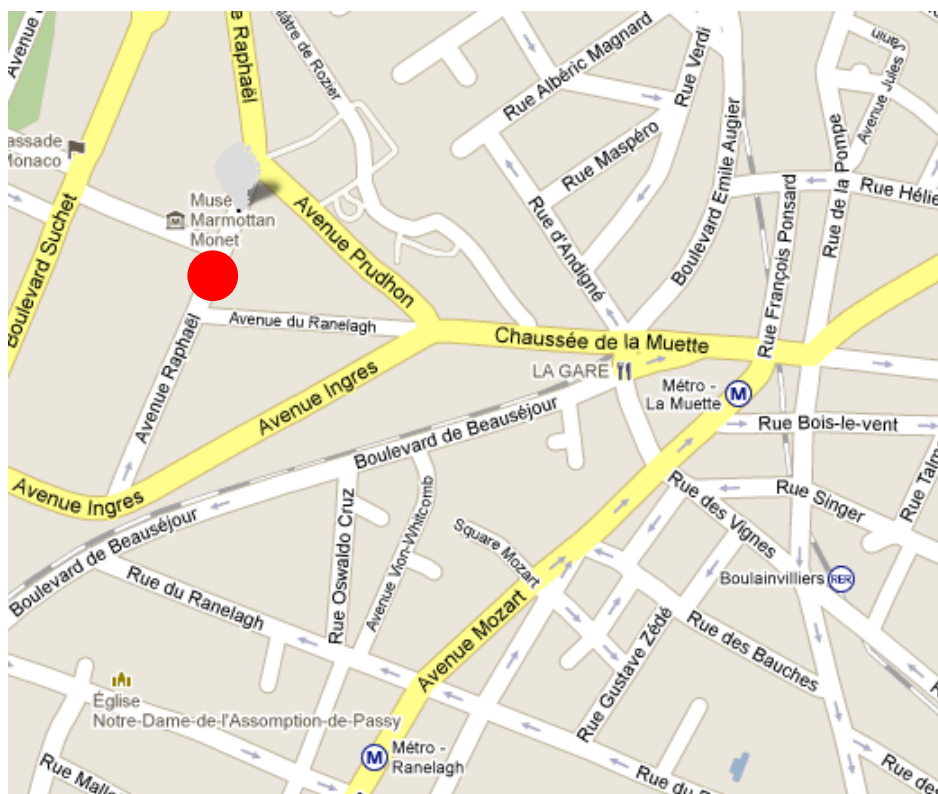
APARTMENT AVENUE RAPHAEL 75016 PARIS



On the 5th floor of a beautiful haussman building
Splendid 232sqm appartement

Price : 4 500 000 €

- Entrance
- Triple reception with a beautiful view on the Ranelagh gardens
- Kitchen with dining space
- 2 master bedrooms
- 3rd bedroom possible
- 2 bathrooms
- 2 toilets
- 3 parking units
- 1 basement
- Service studio possible



Matthieu MERCHADOU
Mob: +33 6 17 02 06 06
mmerchadou@meridian-i.com

Martine MELKI
Mob: +33 6 14 44 64 79
mmelki@meridian-r.com

Mailys MARTINEZ
Mob: +33 6 17 02 05 96
mailys@meridian-r.com

MERIDIAN RESIDENTIAL

16 Avenue Hoche F-75008 Paris

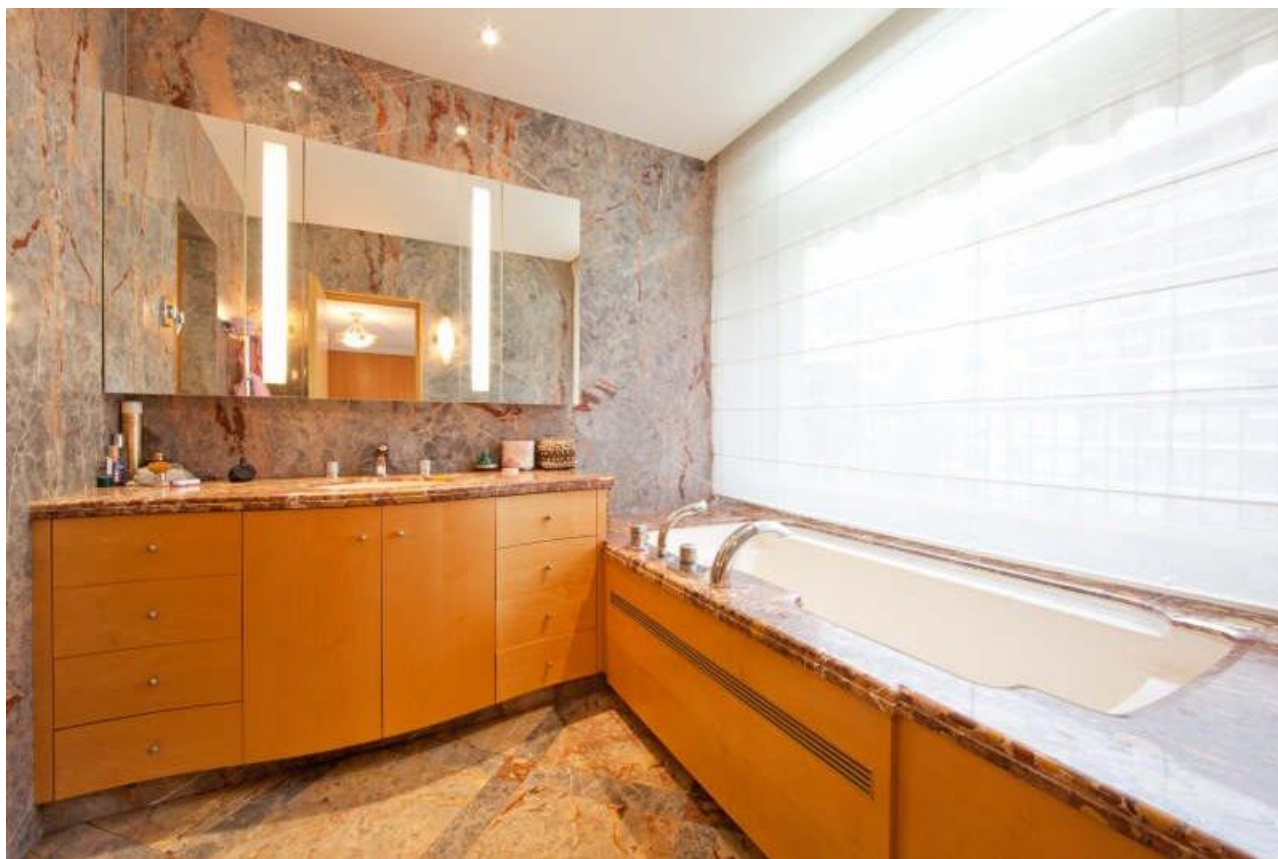
Tel : +331-49-53-08-03 / Fax: +331-49-53-08-17

RCS Paris B 447 629 890 / Carte de transaction T 10264



MERIDIAN
RESIDENTIAL

APARTMENT AVENUE RAPHAEL 75016
PARIS



MERIDIAN RESIDENTIAL

16 Avenue Hoche F-75008 Paris

Tel : +331-49-53-08-03 / Fax: +331-49-53-08-17

RCS Paris B 447 629 890 / Carte de transaction T 10264



MERIDIAN
RESIDENTIAL

APARTMENT AVENUE RAPHAEL 75016
PARIS



MERIDIAN RESIDENTIAL

16 Avenue Hoche F-75008 Paris

Tel : +331-49-53-08-03 / Fax: +331-49-53-08-17

RCS Paris B 447 629 890 / Carte de transaction T 10264