



MERIDIAN
RESIDENTIAL

APARTMENT AVENUE GEORGES MANDEL, 75016 PARIS

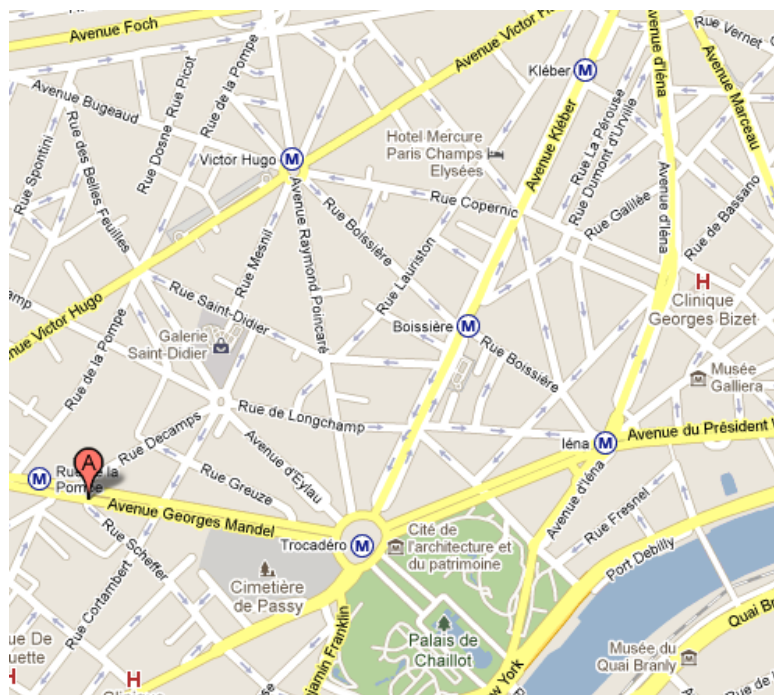


On the 3rd floor of a beautiful freestone building,
Splendid 280 sqm apartment

Price : 4 725 000 €



- Entrance gallery
- Double reception
- Large kitchen
- 4 bedrooms
- 3 bathrooms
- Dressings
- Large spaces
- Mouldings, parquet floor, chimneys, elevator
- Clear view,
- Very luminous
- 2 maids rooms
- 1 parking unit



Matthieu MERCHADOU
Mob: +33 6 17 02 06 06
mmerchadou@meridian-i.com

Martine MELKI
Mob: +33 6 14 44 64 79
mmelki@meridian-r.com

Mailys MARTINEZ
Mob: +33 6 17 02 05 96
mailys@meridian-r.com

MERIDIAN RESIDENTIAL

16 Avenue Hoche F-75008 Paris

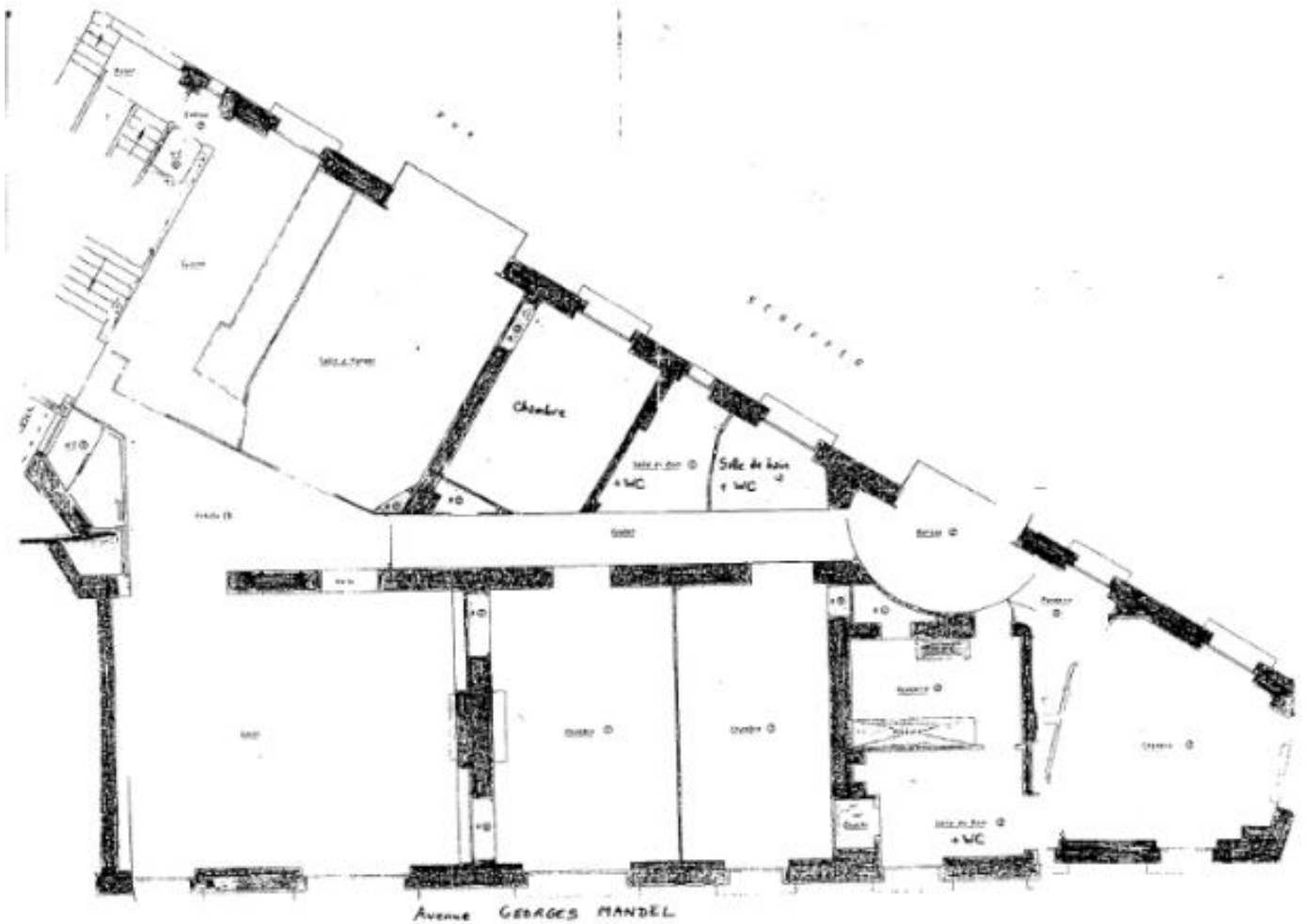
Tel : +331-49-53-08-03 / Fax: +331-49-53-08-17

RCS Paris B 447 629 890 / Carte de transaction T 10264



MERIDIAN
RESIDENTIAL

APARTMENT AVENUE GEORGES
MANDEL, 75016 PARIS



MERIDIAN RESIDENTIAL

16 Avenue Hoche F-75008 Paris

Tel : +331-49-53-08-03 / Fax: +331-49-53-08-17

RCS Paris B 447 629 890 / Carte de transaction T 10264